

# ImpactECS version 7.0

## New Release Notes



**Release Date: January 2013**



Note: Any unreleased services or features referenced in this or other press releases or public statements are not currently available and may not be delivered on time or at all. Customers who purchase our services should make their purchase decisions based upon features that are currently available.

Last Updated: January 16, 2013

©Copyright 2013 3C Software. All rights reserved.

**Contents**

- About the Release Notes ..... 3
- ImpactECS Enterprise Cost System version 7.0 ..... 3
- What’s New for Administrators ..... 3**
  - Support for Windows Domain Groups..... 3
  - Improved Status and Message Logs..... 3
  - Side-by-side ImpactECS version installations..... 3
  - Improved Database Naming Conventions ..... 3
- What’s New for Model Builders ..... 4**
  - Integrated Charts ..... 4
  - Dependent Picklists..... 4
  - Parallel Task Execution..... 5
  - Increased Character Limits for ImpactECS Item Names ..... 5
  - Form Events Pane ..... 5
  - Query Parameter Binding ..... 5
  - Creating Outlines ..... 5
- What’s New for Core Users ..... 6**
  - Default Item Views..... 6
  - Drill-down for Impact Items..... 6
  - Advanced Grid Controls ..... 6
  - Multi-row Editing ..... 7
  - Copy and Paste Enhancements..... 7
  - Multi-item Views..... 8
  - Status Bar ..... 8
  - Text Wrap..... 8
- What’s New for Programmers ..... 9**
  - System Events ..... 9
  - Client Actions ..... 9
  - Script Debugging with Visual Studio ..... 9
  - Export to Excel from Scripts..... 9

## About the Release Notes

This document describes many of the new features and enhancements in ImpactECS version 7.0 grouped by individual applications. When the software release is available, the online documentation will be updated with all of the new features added in this release including step-by-step instructions.

---

## ImpactECS Enterprise Cost System version 7.0

### What's New for Administrators

#### Support for Windows Domain Groups

ImpactECS supports Windows Domain groups which makes it possible for administrators to manage security and permissions for entire groups instead of managing each user separately.



#### Improved Status and Message Logs

With ImpactECS 7.0, detailed status and message logs are now written to database tables and are accessible to model administrators.

#### Side-by-side ImpactECS version installations

ImpactECS versions 6.5 and 7.0 can run simultaneously on the same machine, allowing administrators to manage models in both environments during their upgrade process.

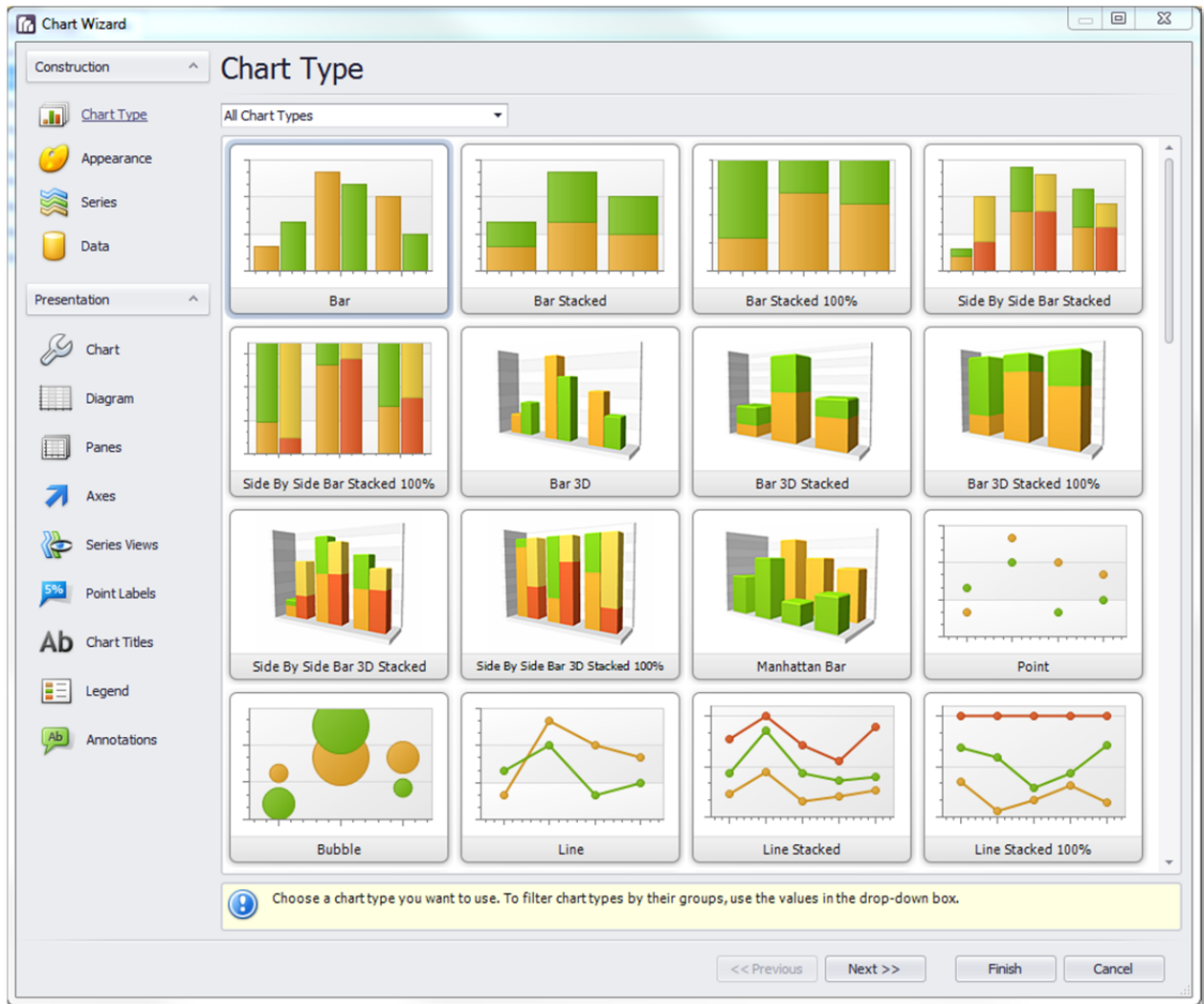
#### Improved Database Naming Conventions

Database table names in ImpactECS have been standardized with the naming convention Impact[TableName] to make it easier to identify or isolate Impact tables within a database.

## What's New for Model Builders

### Integrated Charts

It's been said that a picture is worth a thousand words. In the new release of ImpactECS, a picture is worth a thousand numbers with the new integrated charting feature. You can now build a variety of charts without the need to export data to spreadsheets. Charts are stored in the Reports folder and can be created from many of the ImpactECS item types.



### Dependent Picklists

Model builders can define the contents of a child picklist based on parameters selected in the parent list, limiting the available choices to those valid for the parent.

## Parallel Task Execution

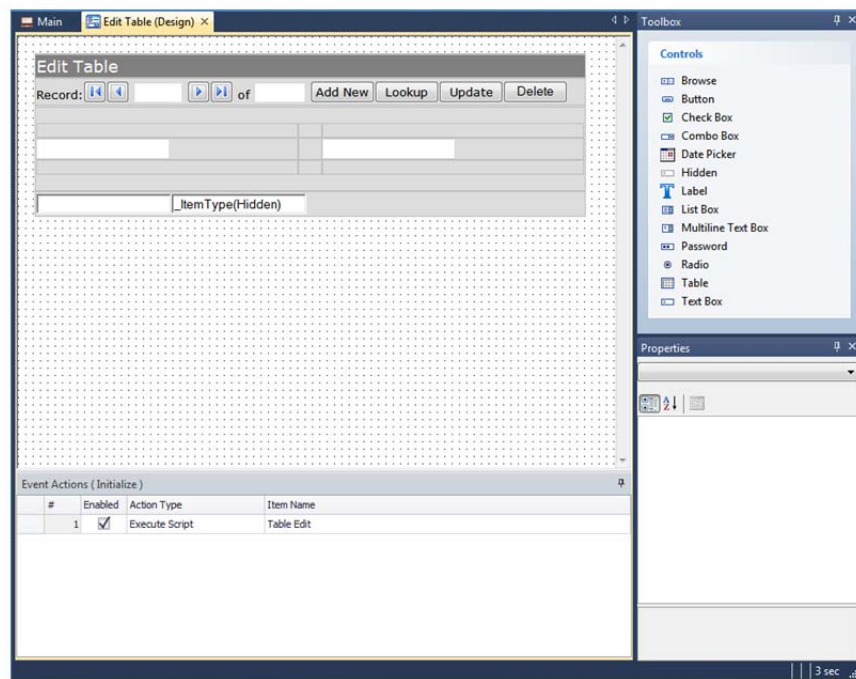
ImpactECS version 7.0 takes advantage of multi-core processing technology to simultaneously perform tasks or run calculations which substantially improves performance.

## Increased Character Limits for ImpactECS Item Names

Version 7.0 allows for item names longer than the former 31 characters. The default length maximum is 255 characters, but can be expanded beyond this limit if required.

## Form Events Pane

The Form events pane is now dockable on the Desktop Client so it is always visible when designing Forms.



## Query Parameter Binding

To improve usability and reduce redundant data entry, version 7.0 performs a factor search algorithm to pre-populate Query parameters.

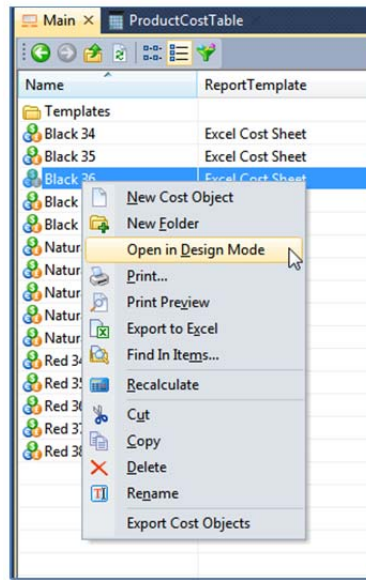
## Creating Outlines

Similar to the Grid Grouping functionality, there is another simplified approach to create nested or indented data lists within ImpactECS.

## What's New for Core Users

### Default Item Views

In an effort to streamline the user interface, ImpactECS Item Types now support a new default view that hides many of the elements used during model design. Items that support default views include Calculations, Cost Objects, Forms, Processes, Queries and Tables.



### Drill-down for Impact Items

The Desktop Client now supports drill-down capabilities for cells formatted with "Define Lists" that specify Impact items as their Source Type. This feature provides an alternate means of navigating Models to view detailed information behind individual cells.

### Advanced Grid Controls

Viewing, sorting, grouping and filtering information within ImpactECS has never been easier. With the newly developed grid controls, users have the ability to control how data is presented within a model.

#### ***Grid Filtering***

The Desktop Client now supports the ability to show and hide specific grid rows based on user-defined conditions on any view. This feature is similar to the "Auto Filter" functionality in Microsoft Excel.

#### ***Grid Sorting***

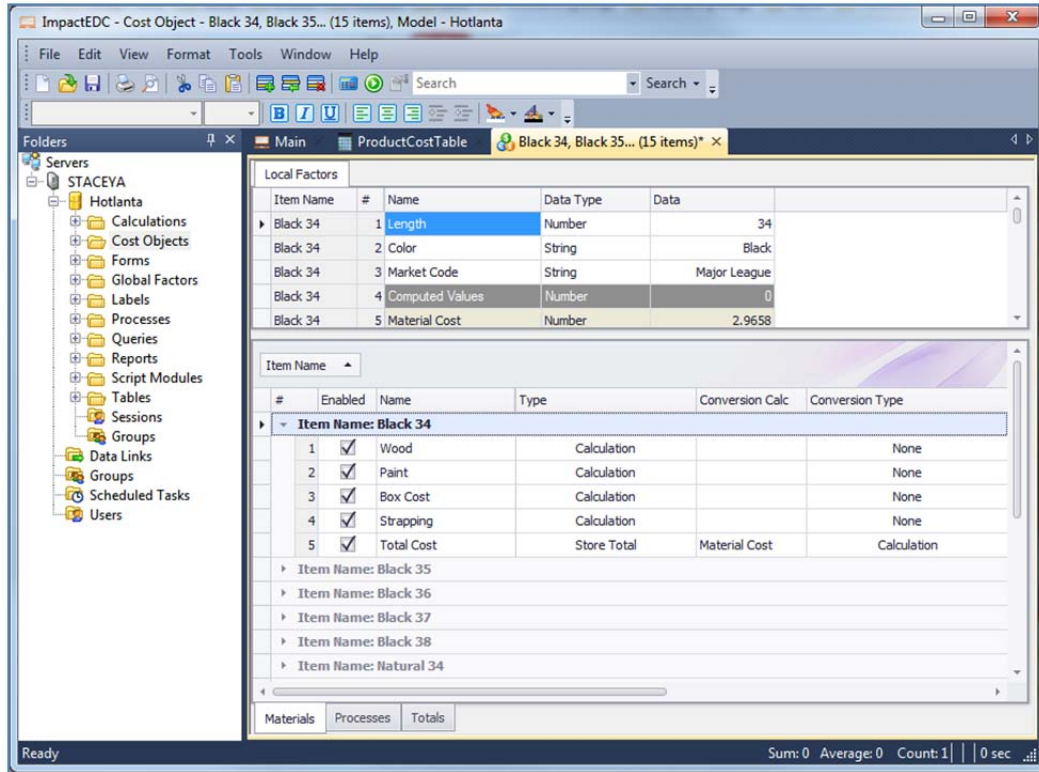
Users can sort or reorder data contained in their Impact Items by the values in each individual column or multiple columns.

### Grid Search

The new grid search box on the Desktop Client allows users to perform a universal search within items for specific keywords or terms.

### Grid Grouping

Users can group data by grid columns to streamline data views on the Desktop Client. This feature is similar to the “Group” functionality in Microsoft Excel where grouped rows can expand/collapse by clicking the arrow next to the group header.



### Multi-row Editing

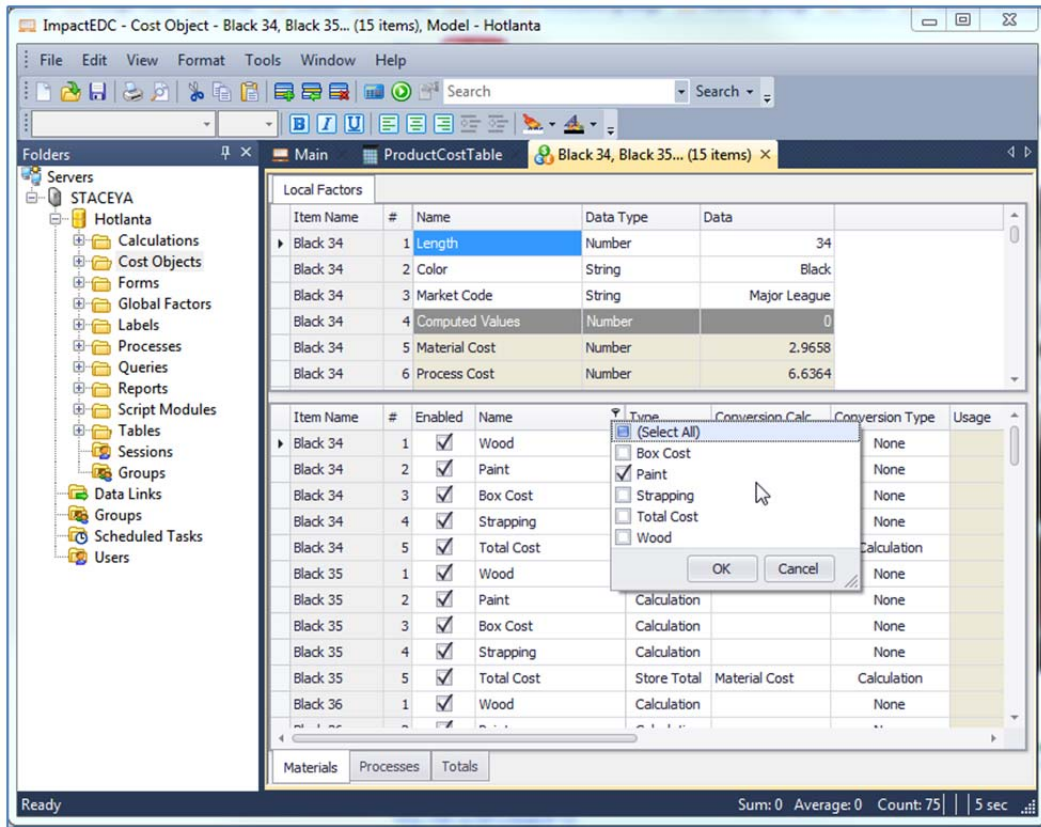
Similar to the “Fill Down” feature on Microsoft Excel, users can enter the same data in multiple cells with the new multi-row editing feature.

### Copy and Paste Enhancements

Improved copy and paste functionality makes it easier to enter data onto the grid. Now, rows are automatically appended to handle the amount of data pasted on the grid and it’s no longer necessary to highlight all of the cells before pasting data on the grid.

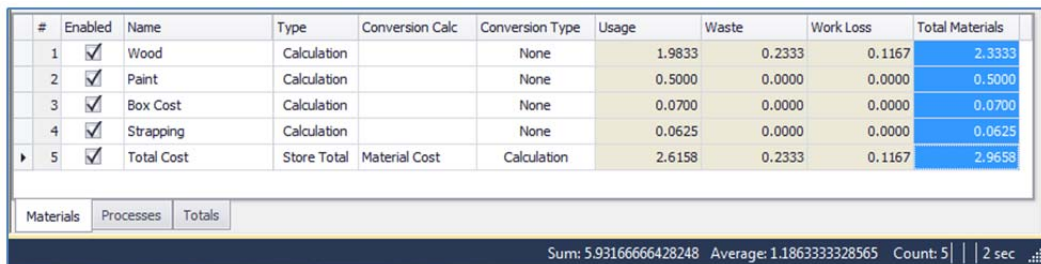
## Multi-item Views

With version 7.0, users can open multiple items in a single screen which saves time when editing data that exists in separate items or comparing data between items.



## Status Bar

Users can now view aggregate information on the status bar when a group of cells is highlighted to aid with quick data validation. Stats available include sum, average, and count of cells highlighted.



## Text Wrap

Cells now automatically expand to the appropriate height to accommodate the text entered when the Text Wrap function is enabled for a cell.



## What's New for Programmers

### System Events

New system events allow programmers to perform custom logic when the following actions occur within their ImpactECS models: OnSaveItems, OnSaveItemAs, OnBeforeDeleteItem, OnAfterDeleteItem, OnBeforeDeleteFolder, OnAfterDeleteFolder, OnOpenModel, OnCreateModel, Confirm, OnTaskStarted, OnTaskFinished, OnLogMessage.

### Client Actions

New client actions let programmers perform the following actions on the Desktop Client: Refresh, OpenURL, OpenItem, PrintTempFile, PrintFile, and OpenTempFile.

### Script Debugging with Visual Studio

Programmers can now use Visual Studio to debug their ImpactECS Script Modules. Simultaneous debugging with different users on a shared model is not currently supported.

### Export to Excel from Scripts

Users can now trigger the "Export to Excel" function from a Script Module.